



# Using the New TURA Data Site

## TURA Virtual Conference Session B

October 27, 2020  
3:00 – 4:30 pm



# Welcome!



Slides and handouts are available at [turi.org/ContinuingEducationConferenceFall2020](https://turi.org/ContinuingEducationConferenceFall2020)



Webinar will be recorded – recording available at same location of TURI's website



Use chat box for questions at any time – we will answer Qs immediately when possible, and we'll find time at the end to answer the rest

- If you are experiencing technical challenges during this session, you can send a chat directly to the moderator (noted as such in the participant list) or email [Brenda@turi.org](mailto:Brenda@turi.org)

# TUR Continuing Education Credits

- This session has been approved for 3 credits
- To be awarded credits from MassDEP you must:
  - Register and pay for this session
  - Participate in polls and/or breakout room discussions
  - Complete and submit the post-conference survey for this session
- You will receive a certificate of completion once you have met these requirements

# Additional 30-minute (*noncredit*) opportunities



## Tuesday October 27 at noon

Hear news about the TURA Program from our TURA partner agency leads (*recorded*)

General timely Program updates, including

- Liz Harriman, TURI – chemicals being considered by the SAB
- Tiffany Skogstrom, OTA – virtual site visits
- **Recording at:**  
[turi.org/ContinuingEducationConferenceFall2020](https://turi.org/ContinuingEducationConferenceFall2020)

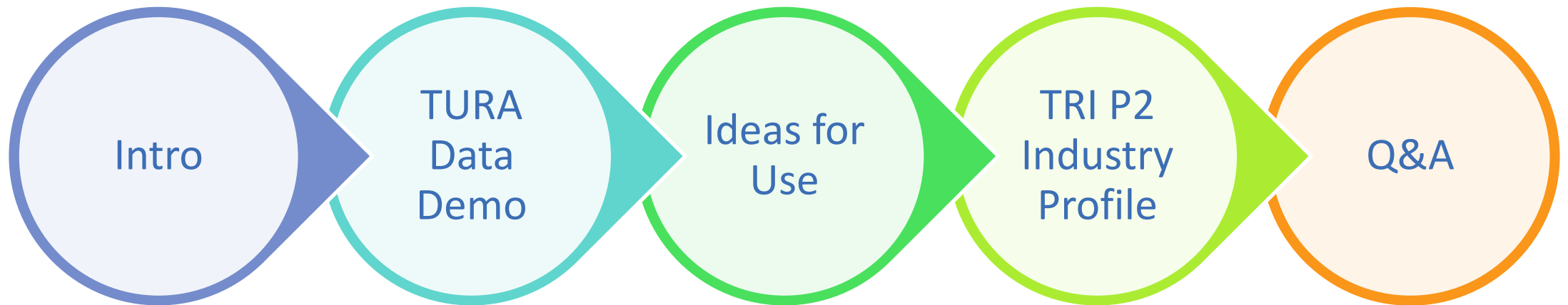


## Thursday November 5 at noon

Network with your peers in dedicated breakout rooms discussing:

- TUR innovations you've seen/explored
- Examples of good and not-so-good faith efforts
- Gathering information when you are not the in-house Planner
- How your company is addressing pandemic impacts
- **Register to Join at:**  
<https://uml.zoom.us/meeting/register/tJwode6rqD4rHNeD2eQtEilfeTYqfLcNnPzR>

# Session Agenda



# Things to keep in mind



- TURA Data is actual reported data
- TURA QC Process
- How the TURA Program measures progress:
  - Core
  - Production adjustment

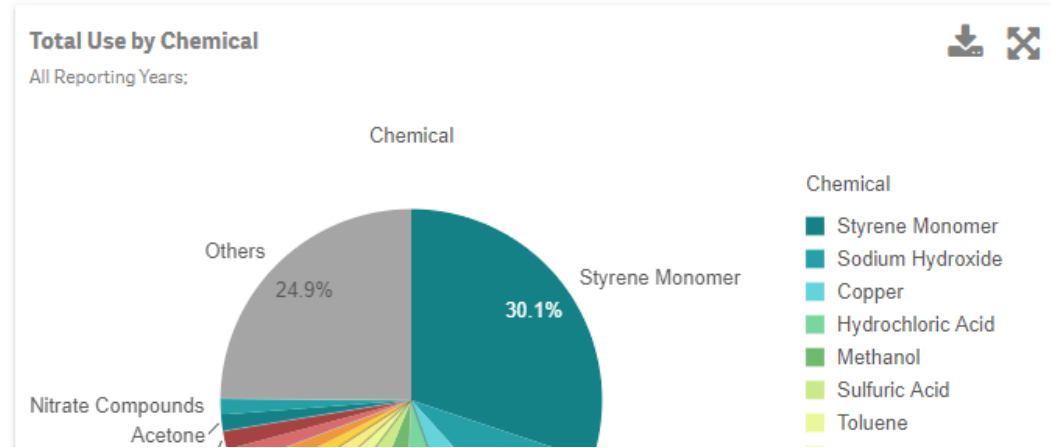
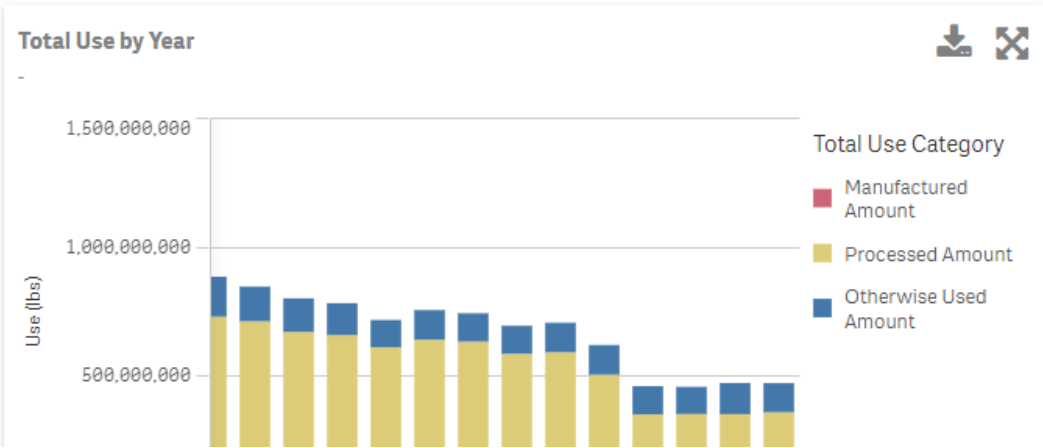
# TURA Data Demonstration

- [https://www.turi.org/Our\\_Work/Toxic\\_Chemicals/New\\_TURA\\_Data\\_Online\\_Tool](https://www.turi.org/Our_Work/Toxic_Chemicals/New_TURA_Data_Online_Tool)



Home   Community Search   Facility Search   Chemical Search   Facilities Map   Data Detail

Reporting Year



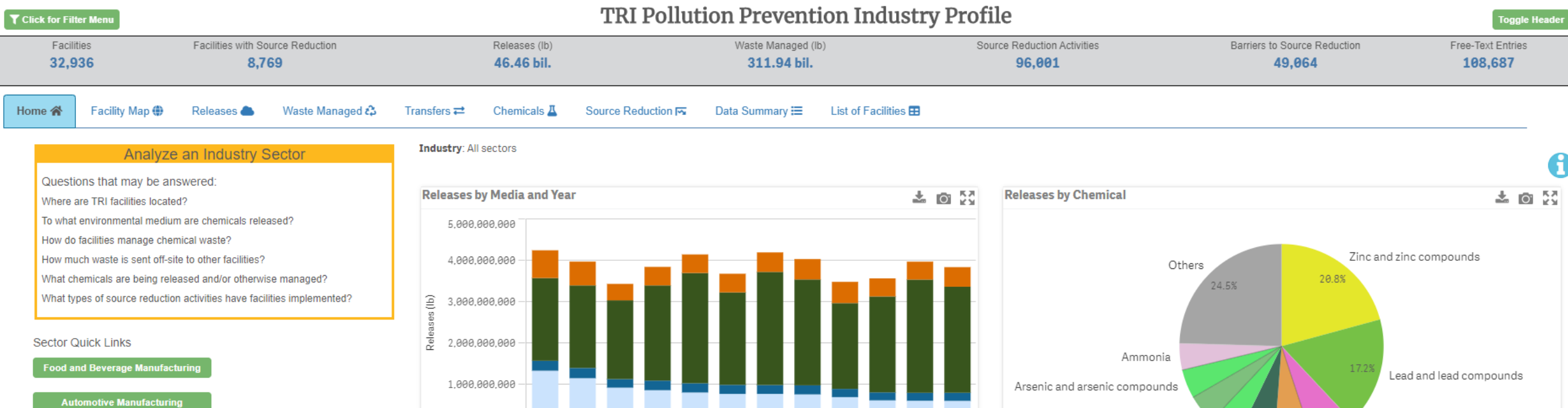
# Ideas for TURA Data Use

- Compare your facility's progress over time
- Promote your successes to management and stakeholders
- Locate older facility data
- Avoid “dropped” chemicals
- Compare to similar facilities
- Look at others' source reduction efforts
- Other?



# TRI Pollution Prevention Industry Profile

- [https://edap.epa.gov/public/extensions/TRI\\_P2\\_Industry\\_Profile/TRI\\_P2\\_Industry\\_Profile.html#TRItabs](https://edap.epa.gov/public/extensions/TRI_P2_Industry_Profile/TRI_P2_Industry_Profile.html#TRItabs)



# Questions



- **Thank you**
  - Heather Tenney
  - [Heather\\_Tenney@uml.edu](mailto:Heather_Tenney@uml.edu)